



**SIPS**<sup>TM</sup>  
**INDUSTRIES**

**STRUCTURAL INSULATED PANELS**

**READYCUT**<sup>TM</sup>

READY WHEN YOU ARE.

# TYPICAL DETAILS MANUAL



 CMA-CM40074

REV

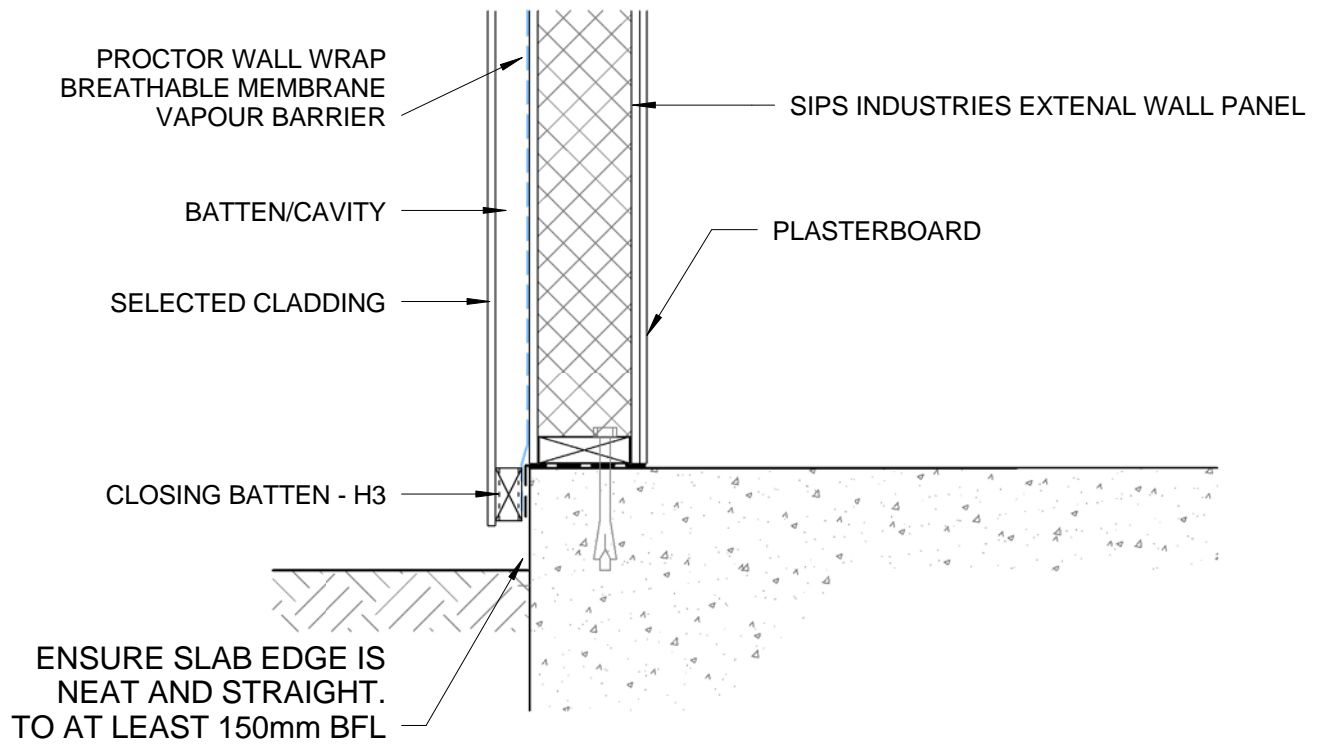
**D**



# DETAIL LIST AND DESCRIPTION

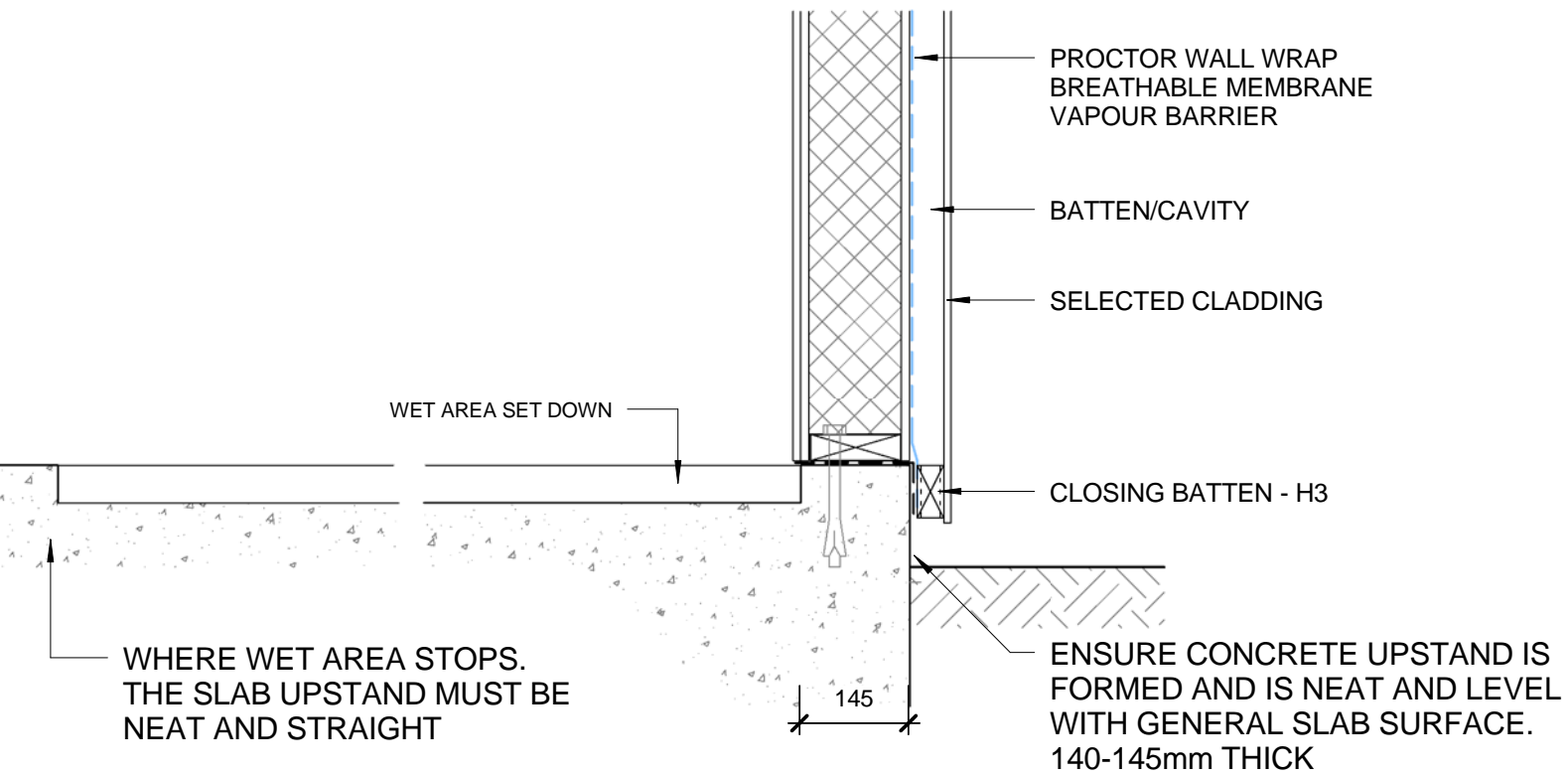
DETAIL LIST			
DRAWING NUMBER	DETAIL NUMBER	DETAIL DESCRIPTION	REVISION
D01	DETAIL LIST		D
D101	Detail 101	Concrete Slab Edge Detailing	D
D102	Detail 102	Concrete Set Down Detailing	D
D103	Detail 103	Sole Plate Set Out Plan	D
D104	Detail 104	Sole Plate - Concrete Fixing	D
D105	Detail 105	Sole Plate - Concrete Fixing	D
D106	Detail 106	Sole Plate - Joist Floor Fixing	D
D107	Detail 107	Sole Plate - Joist Floor Fixing	D
D108	Detail 108	Sole Plate - SIPS Floor Fixing	D
D109	Detail 109	Sole Plate - SIPS Floor Fixing	D
D200	Detail 200	SIPS Box Beam Detailing	D
D201	Detail 201	SIPS Jining Spline - Plan	D
D202	Detail 202	Timber Joining Spline - Plan	D
D203	Detail 203	Steel Column in SIPS - Plan	D
D204	Detail 204	SIPS to Existing Brick - Plan	D
D205	Detail 205	Steel Column in SIPS - Corner Plan	D
D206	Detail 206	Intermediate Joisted Floor - Typical	D
D207	Detail 207	Intermediate Joisted Floor - Continuous SIPS Wall	D
D208	Detail 208	LVL Beam Detail	D
D209	Detail 209	Window Detail - POLAR -Horizontal Weatherboard	D
D210	Detail 210	Window Detail - POLAR -Horizontal Weatherboard	D
D211	Detail 211	Window Detail - POLAR -Horizontal Weatherboard	D
D212	Detail 212	BOUNDARY WALL DETAIL	D
D213	Detail 213	BOUNDARY WALL GUTTER	D
D301	Detail 301	ROOF EAVES - TYPICAL	D
D302	Detail 302	ROOF EAVES - SQUARE CUT	D
D303	Detail 303	ROOF SCILLION DETAIL	D
D304	Detail 304	ROOF EAVES - CONCEALED GUTTER	D
D305	Detail 305	ROOF EAVES - SIPS CEILING	D
D306	Detail 306	ROOF EAVES - SIPS CEILING - FLUSH GUTTER	D
D307	Detail 307	ROOF EAVES - SIPS CEILING - CONCEALED GUTTER	D
D308	Detail 308	RIDGE DETAILS- TYPICAL AND HIDDEN	D

# Concrete Slab Detailing



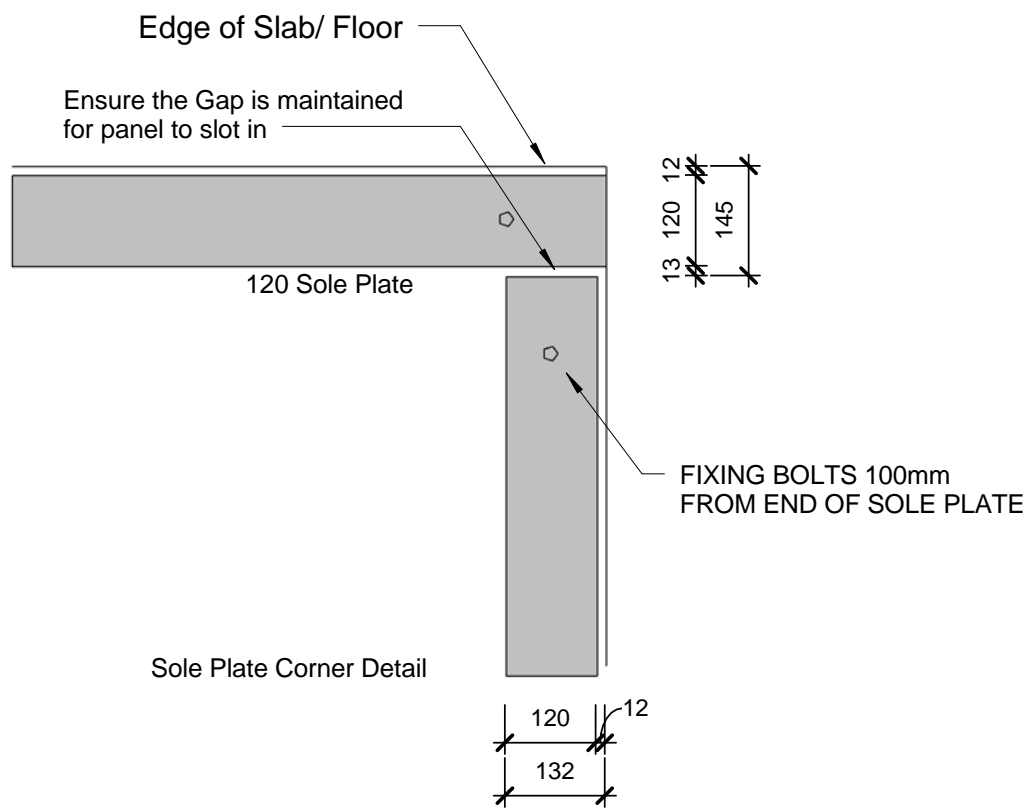


# Concrete Set-Down Detail



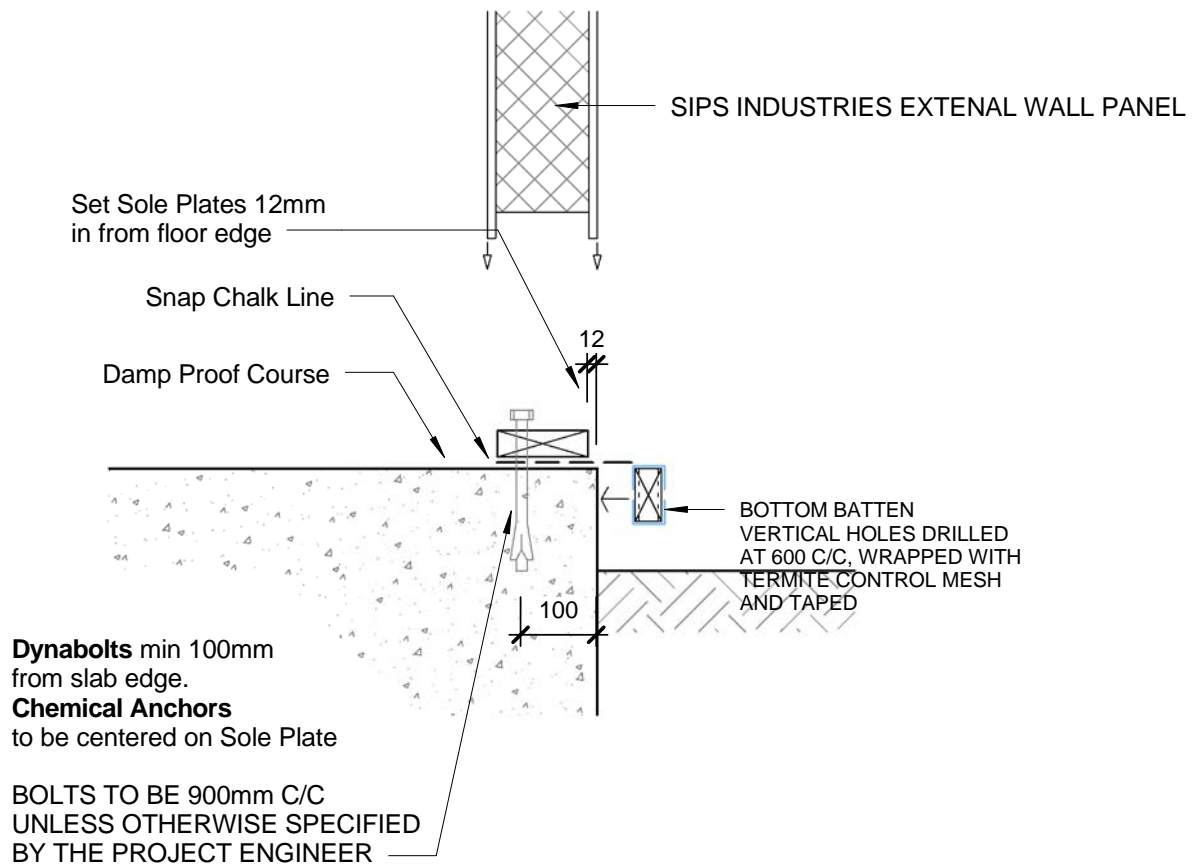


# Sole Plate Plan Detail

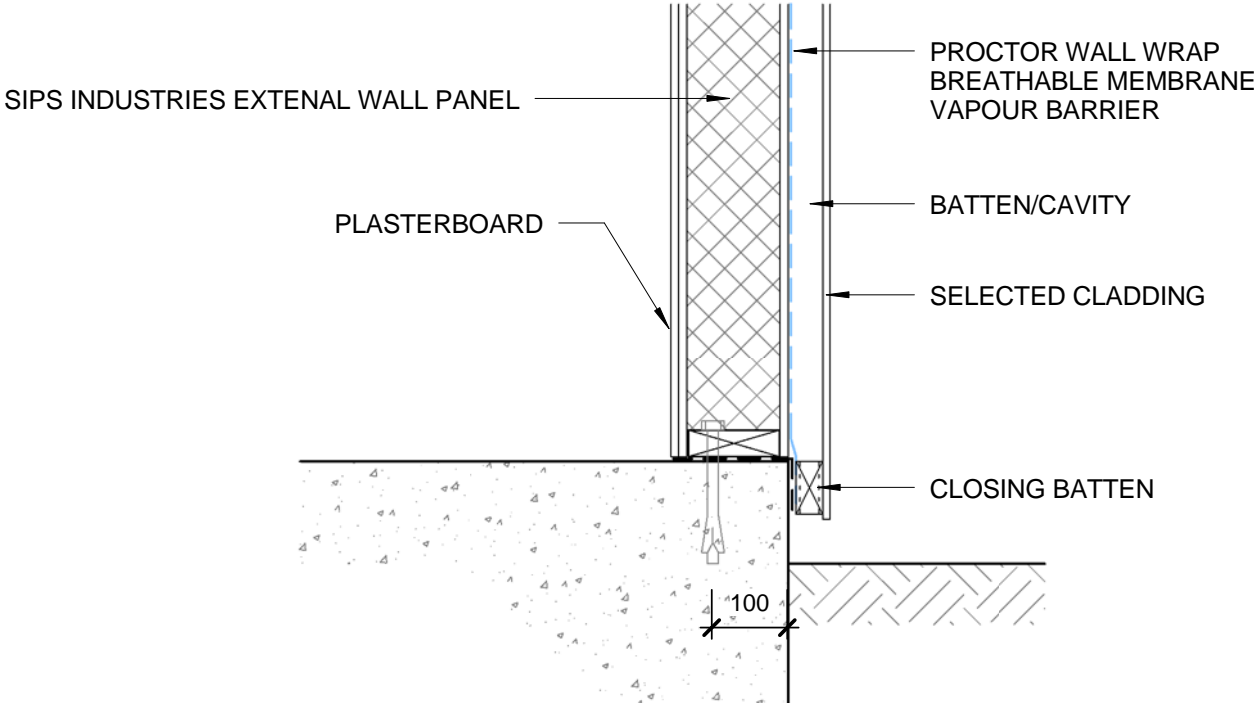




# Sole Plate Section - Concrete Floor Part 1

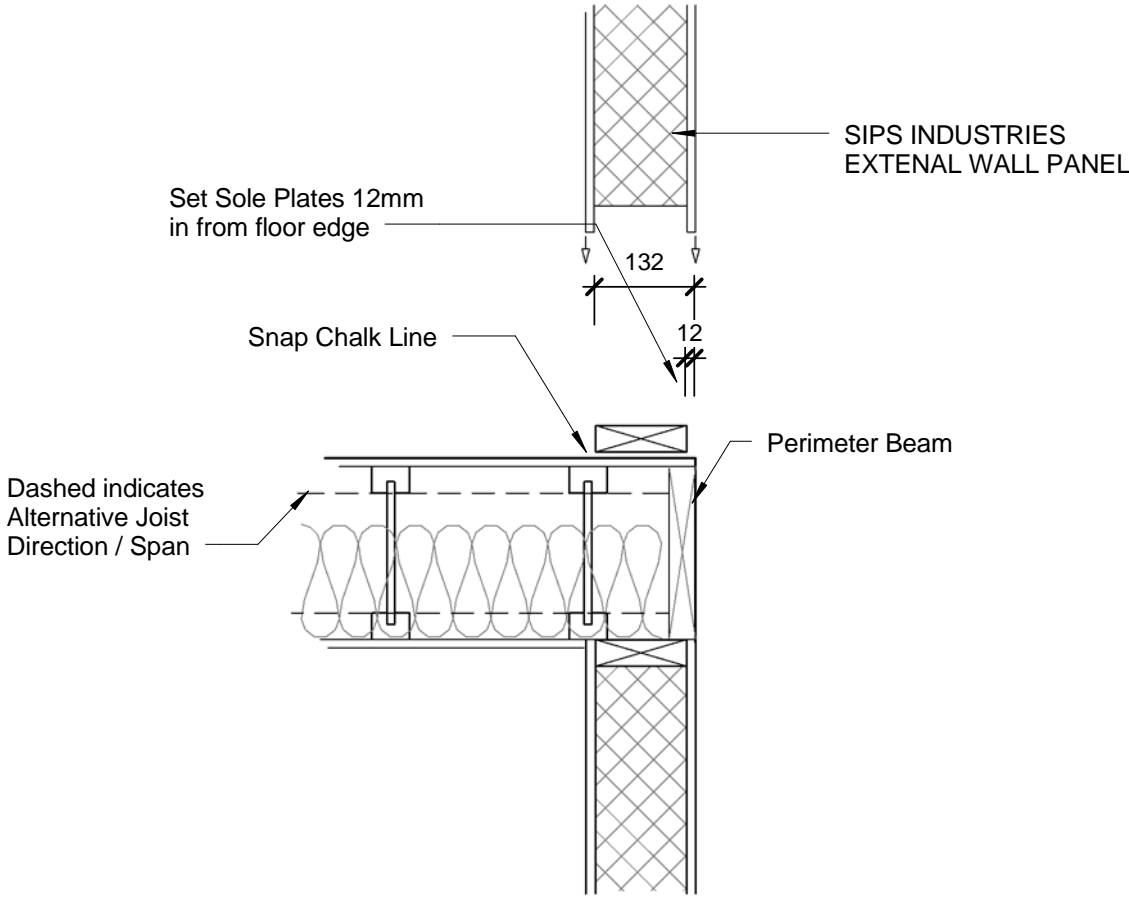


# Sole Plate Section - Concrete Floor Part 2



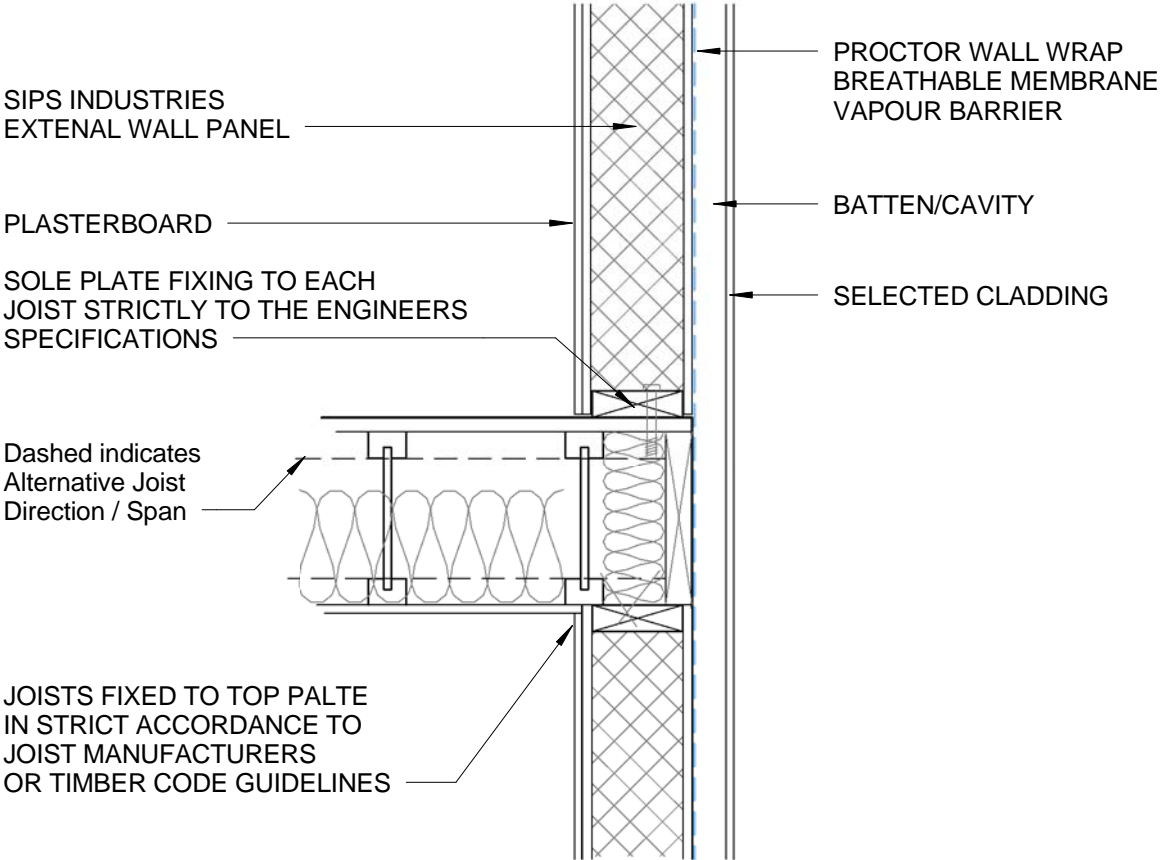


# Sole Plate Section - Joist Floor Part 1



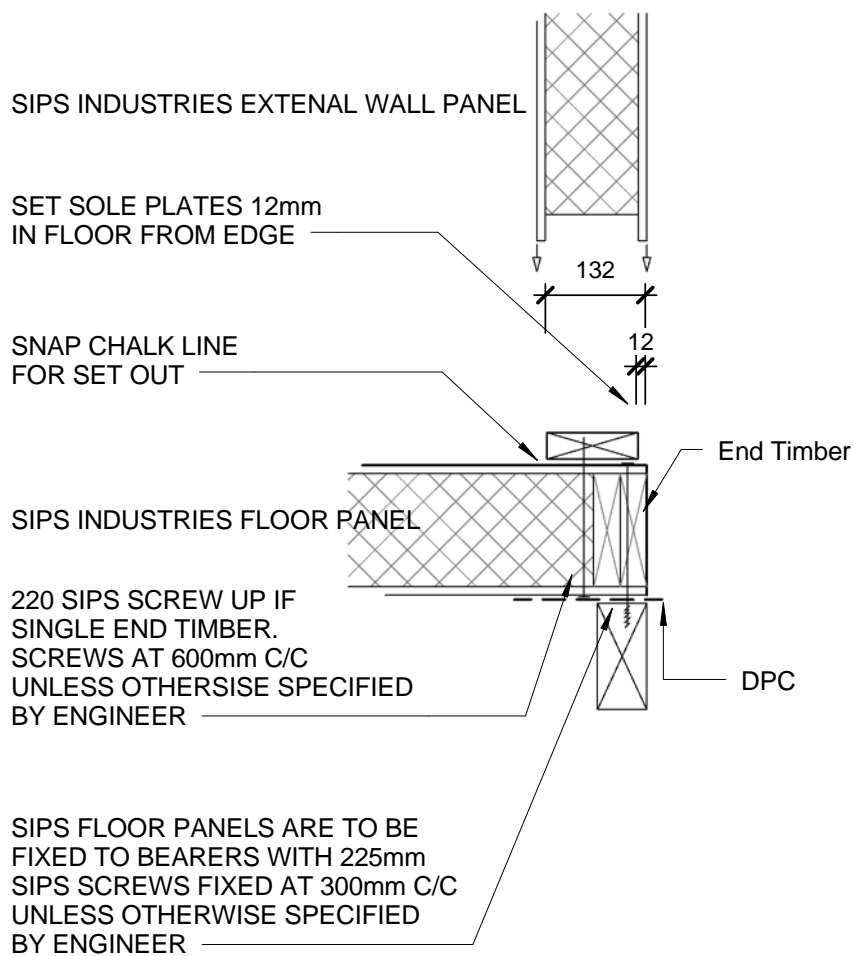


# Sole Plate Section - Joist Floor Part 2

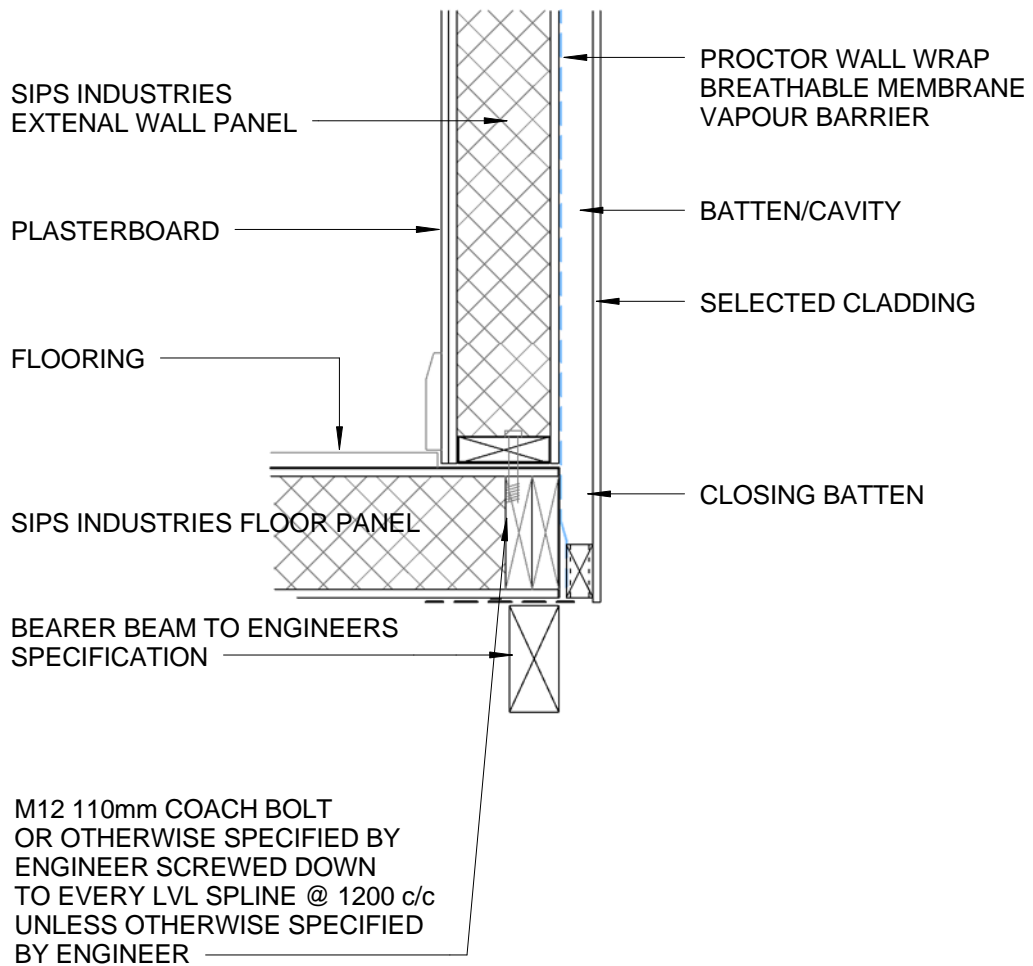




# Sole Plate Section - SIPS Floor Part 1

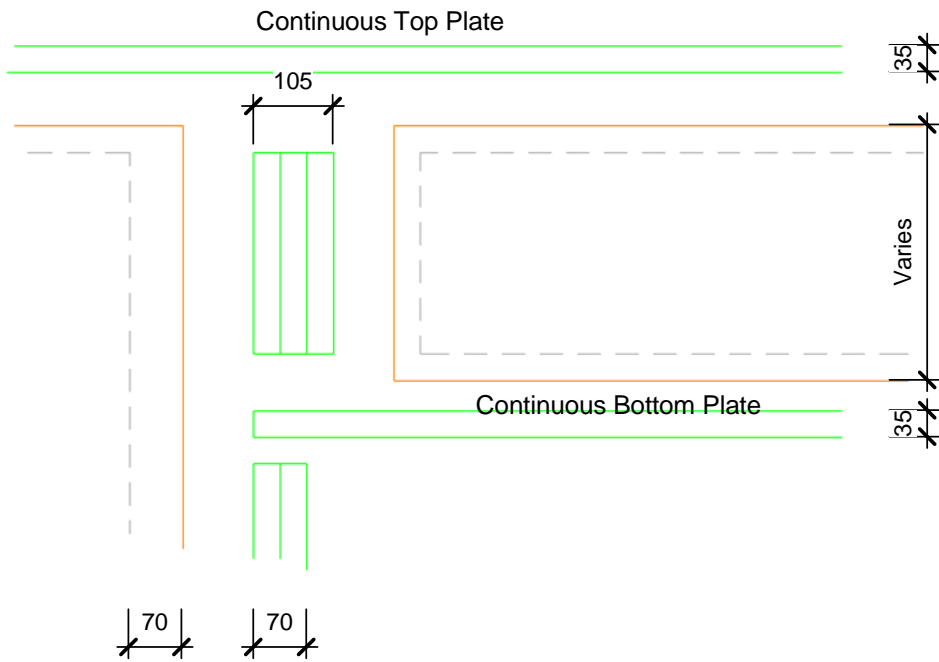


# Sole Plate Section - SIPS Floor Part 2

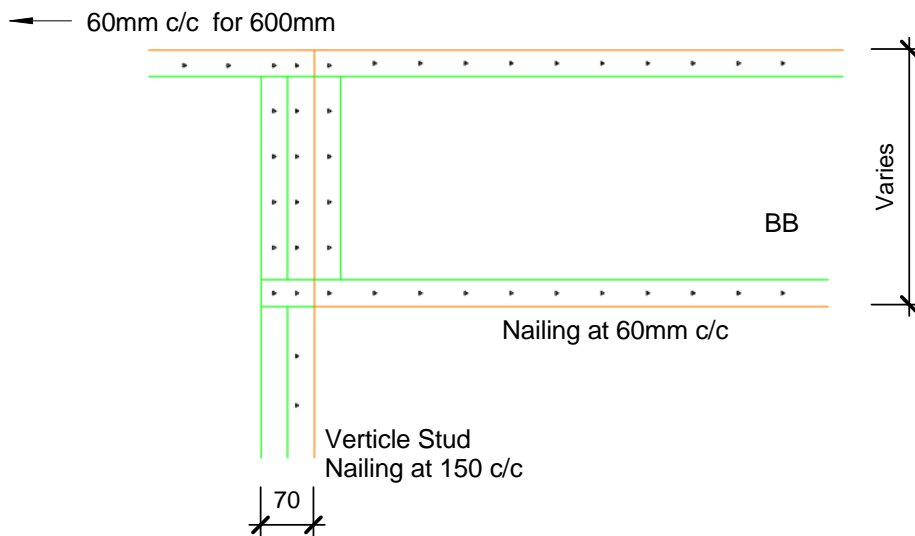




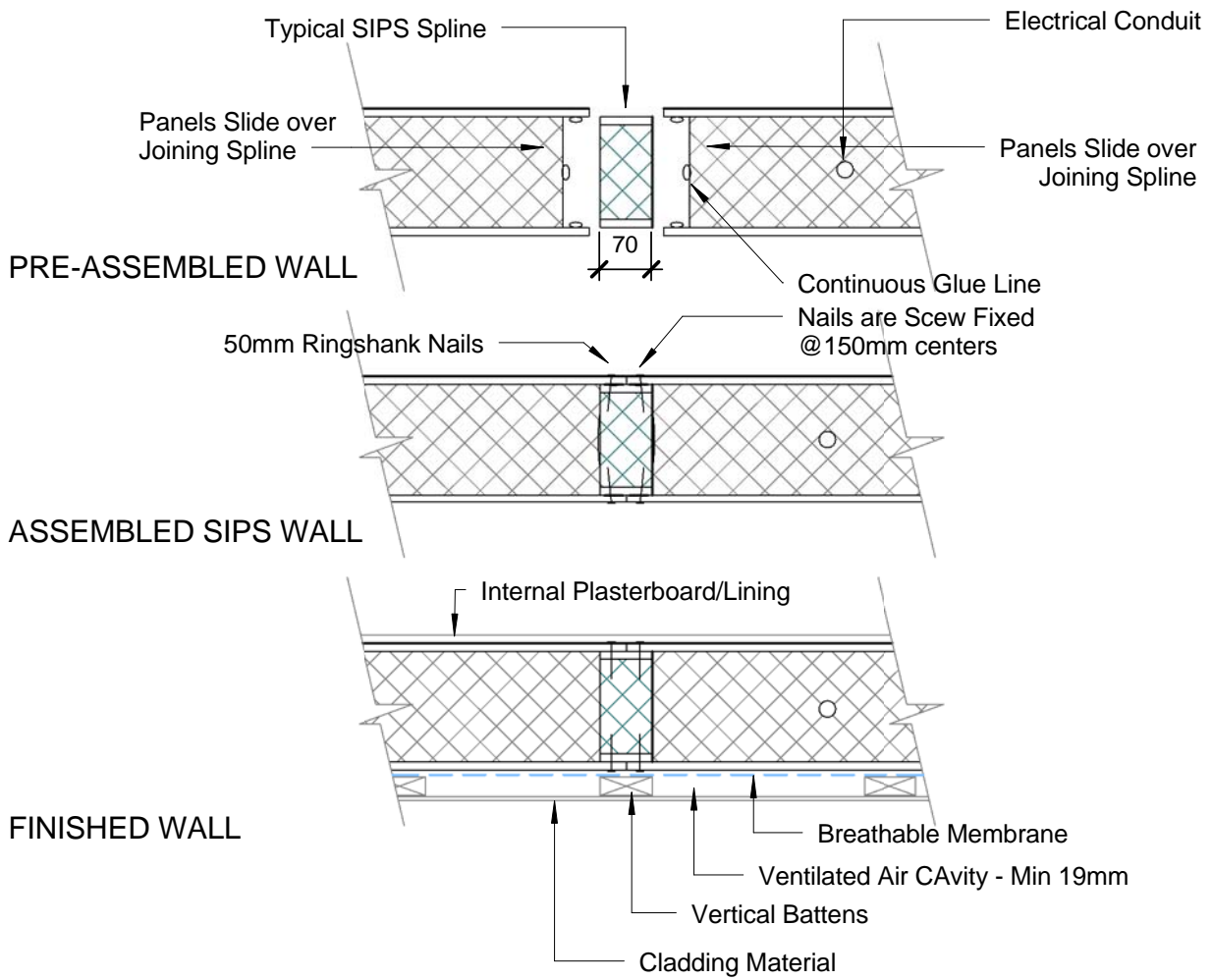
# Box Beam Assembly - Exploded View



# Box Beam Assembly - Assembled

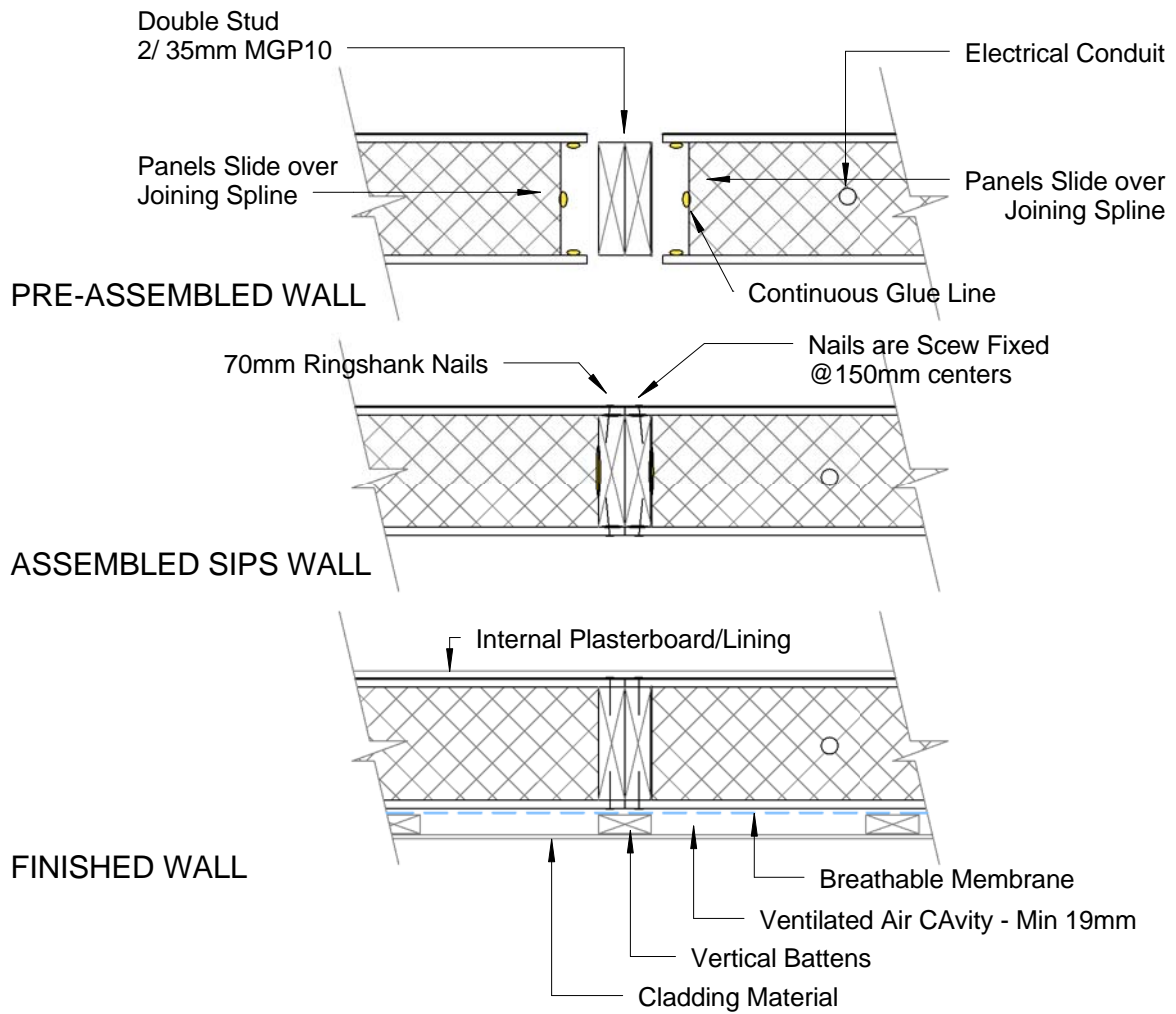


# Joining Spline - SIPS Spline



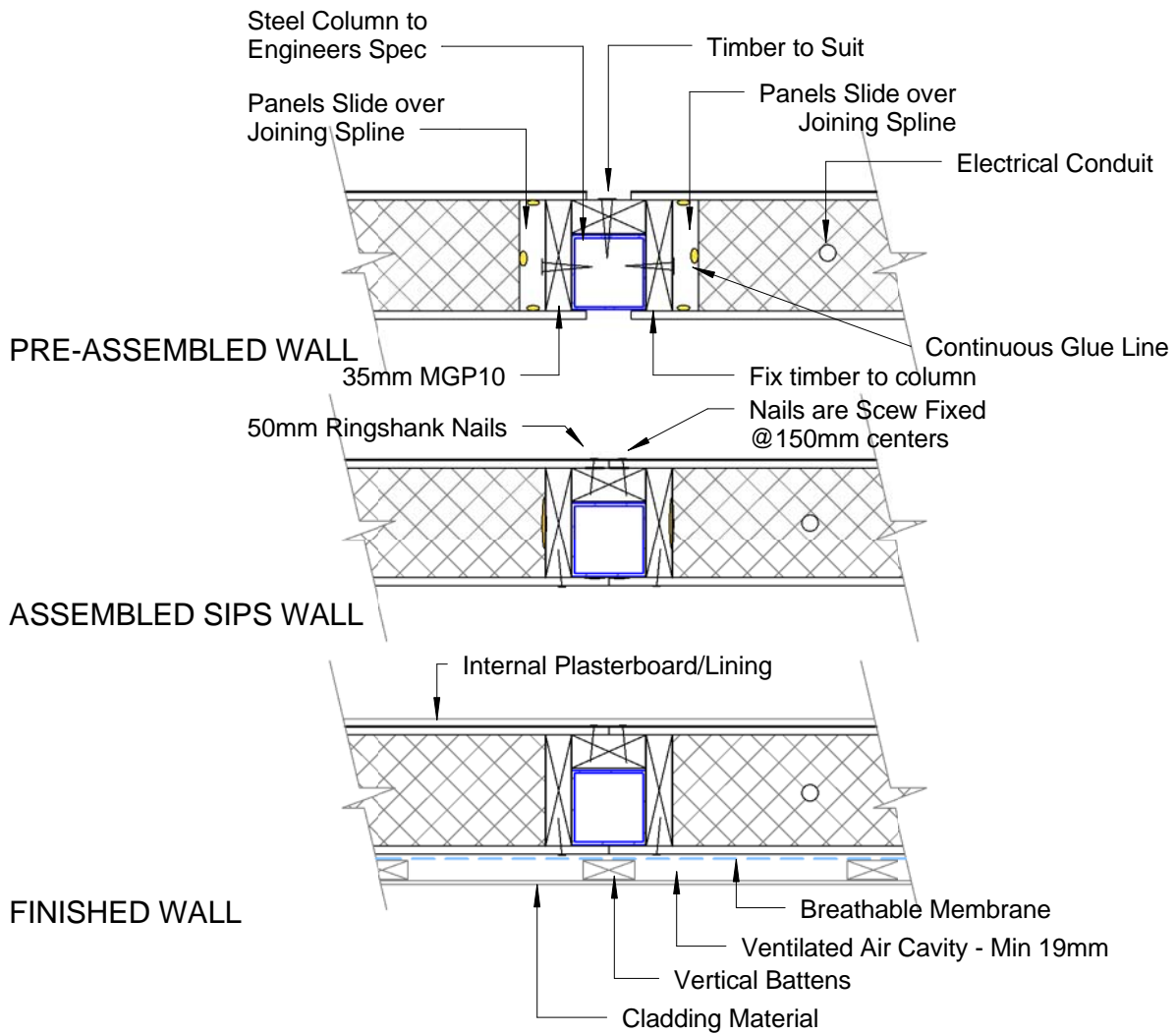


# Joining Spline - Double Stud



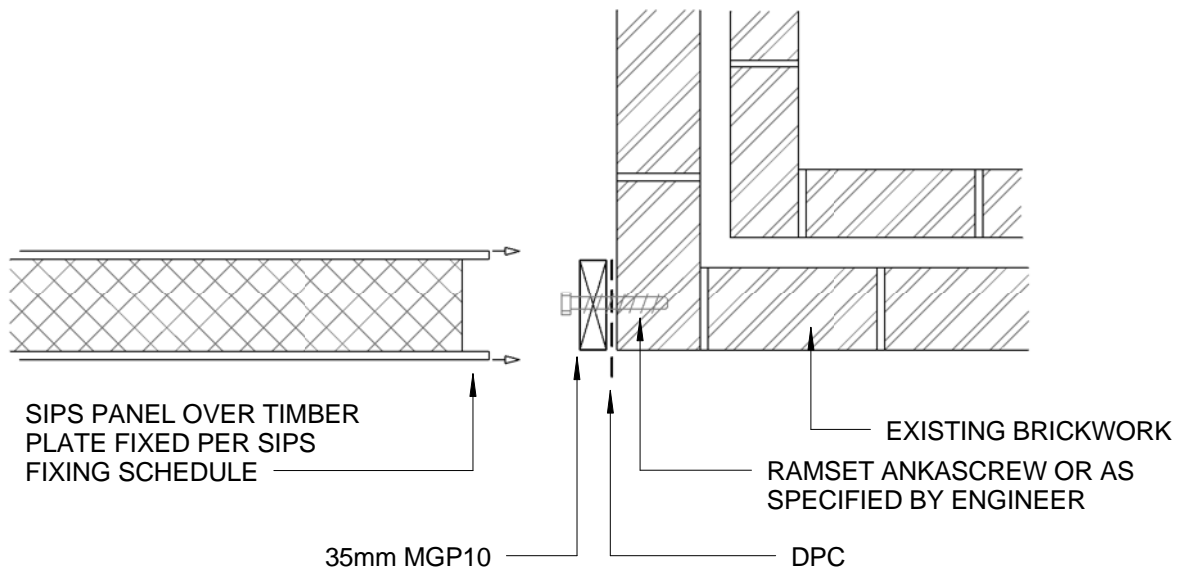


# Steel Column in SIPS Wall





# SIPS to EXISTING BRICK - PLAN

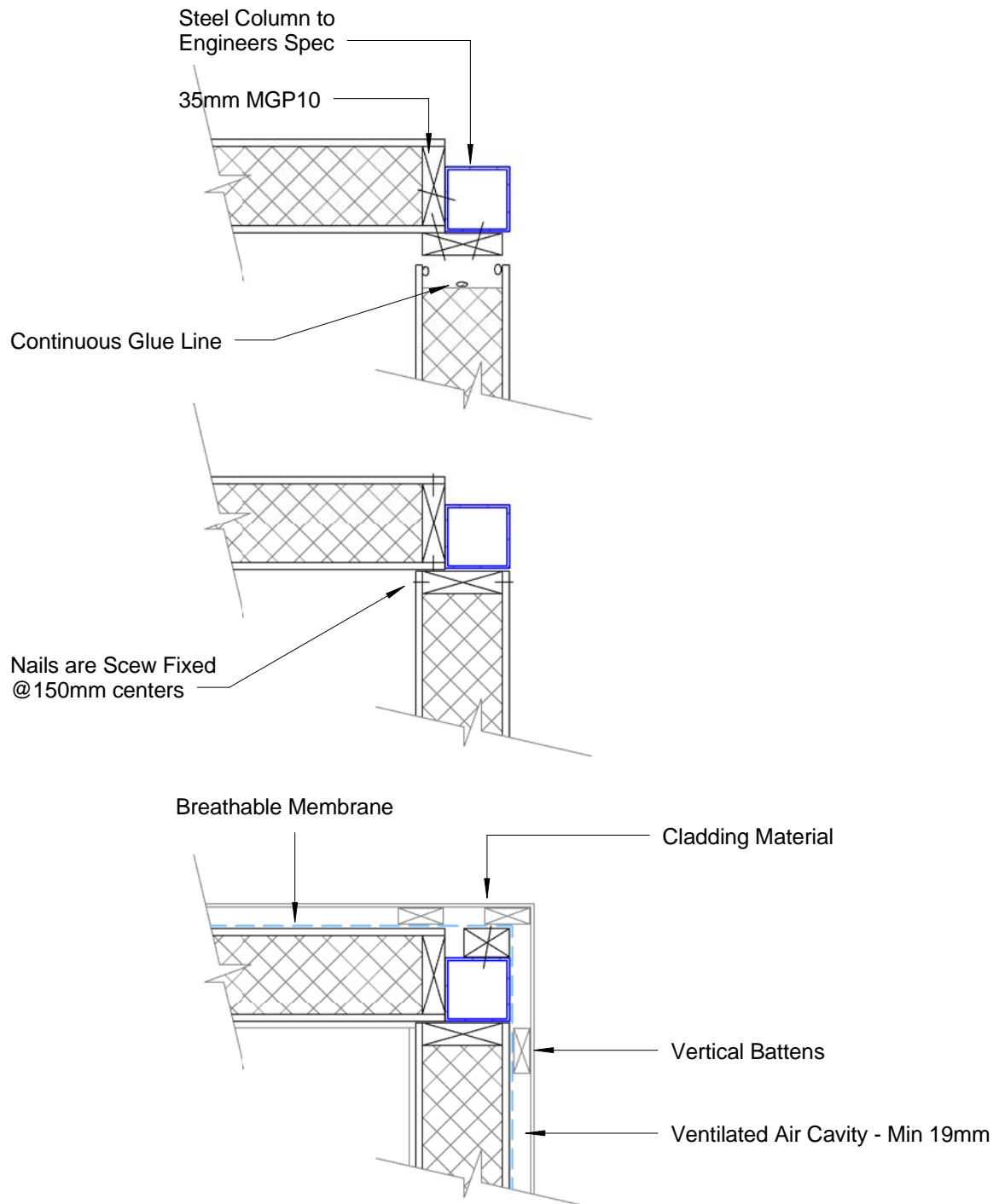


PLAN



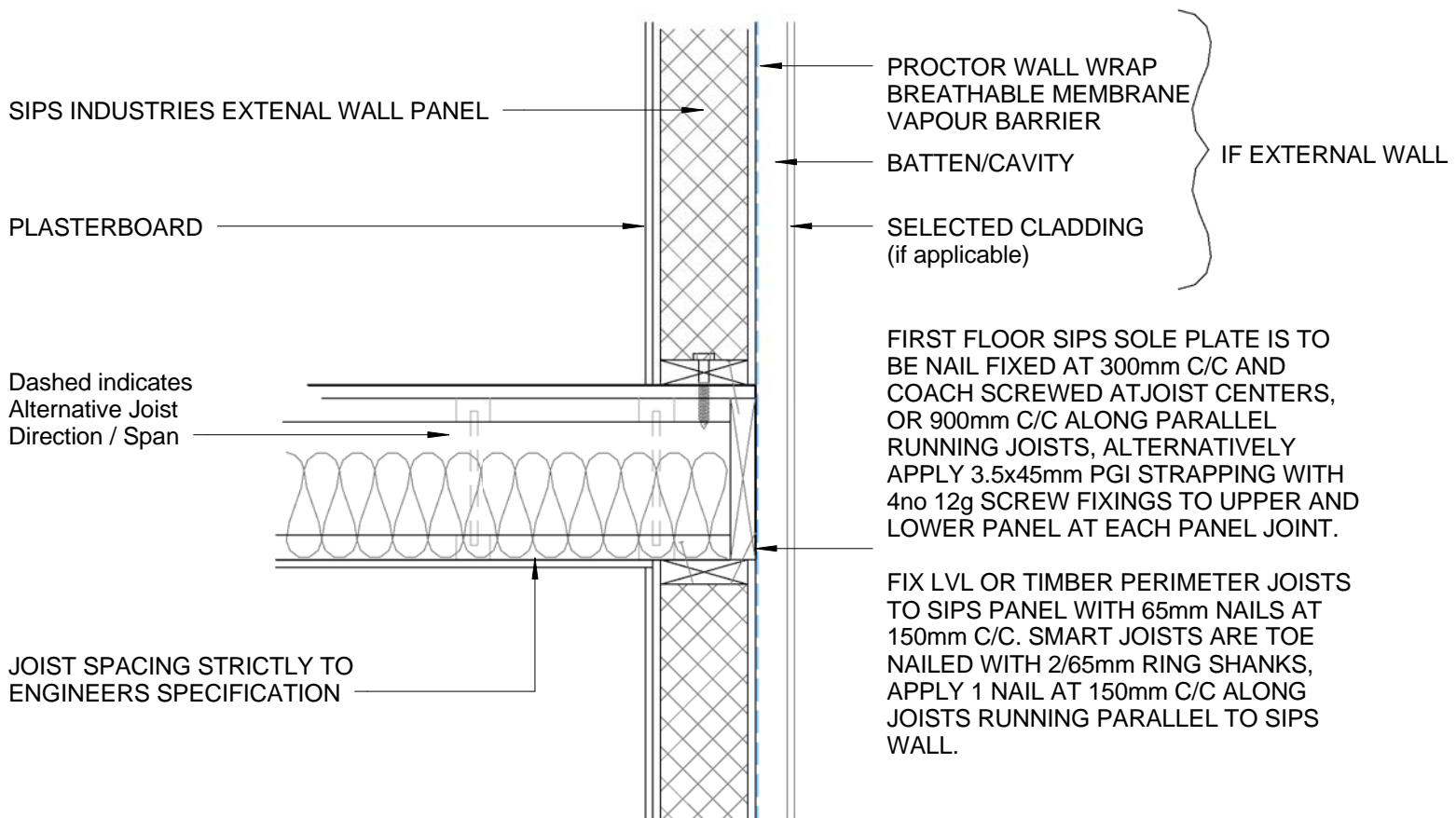


# Steel Corner Column

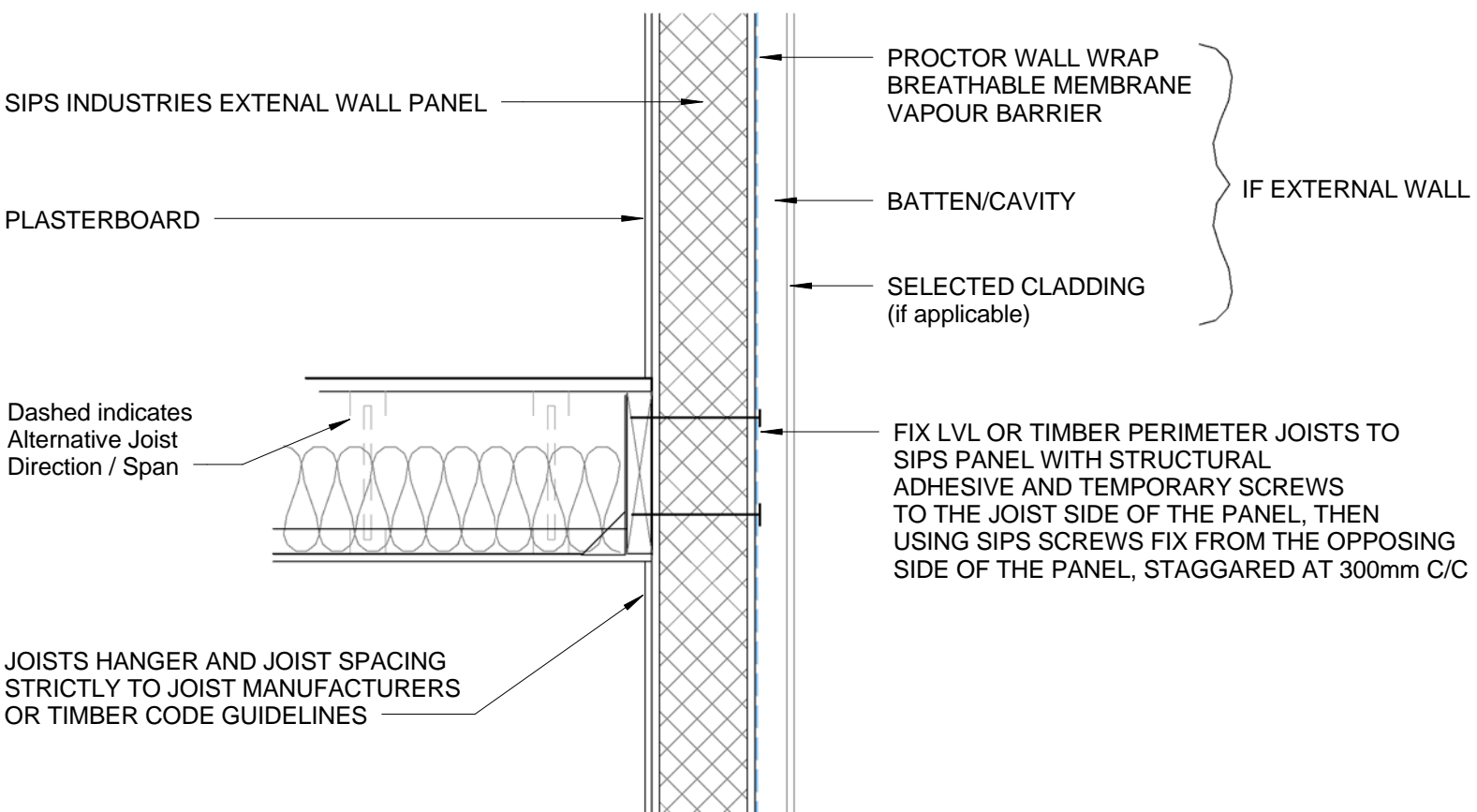




# Intermediate Floor Section - Typical

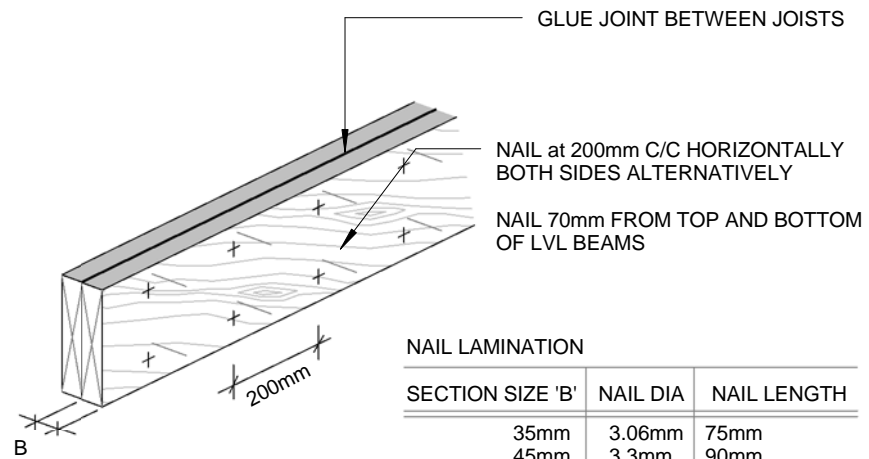
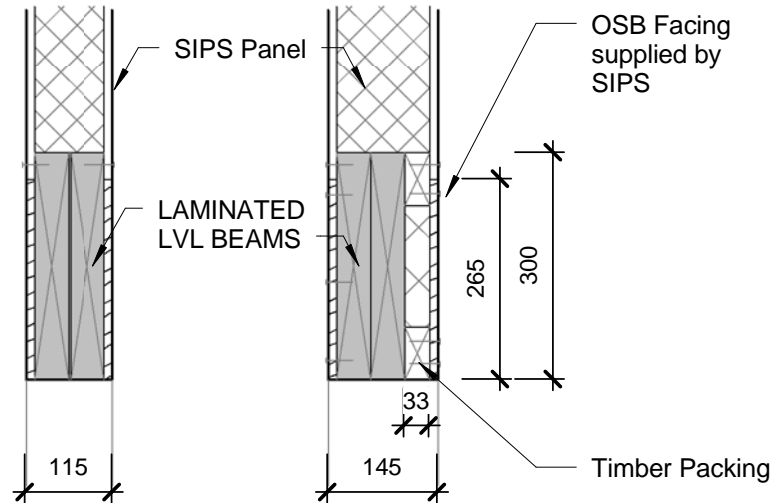


# Intermediate Floor Section - Continuous Wall Panel





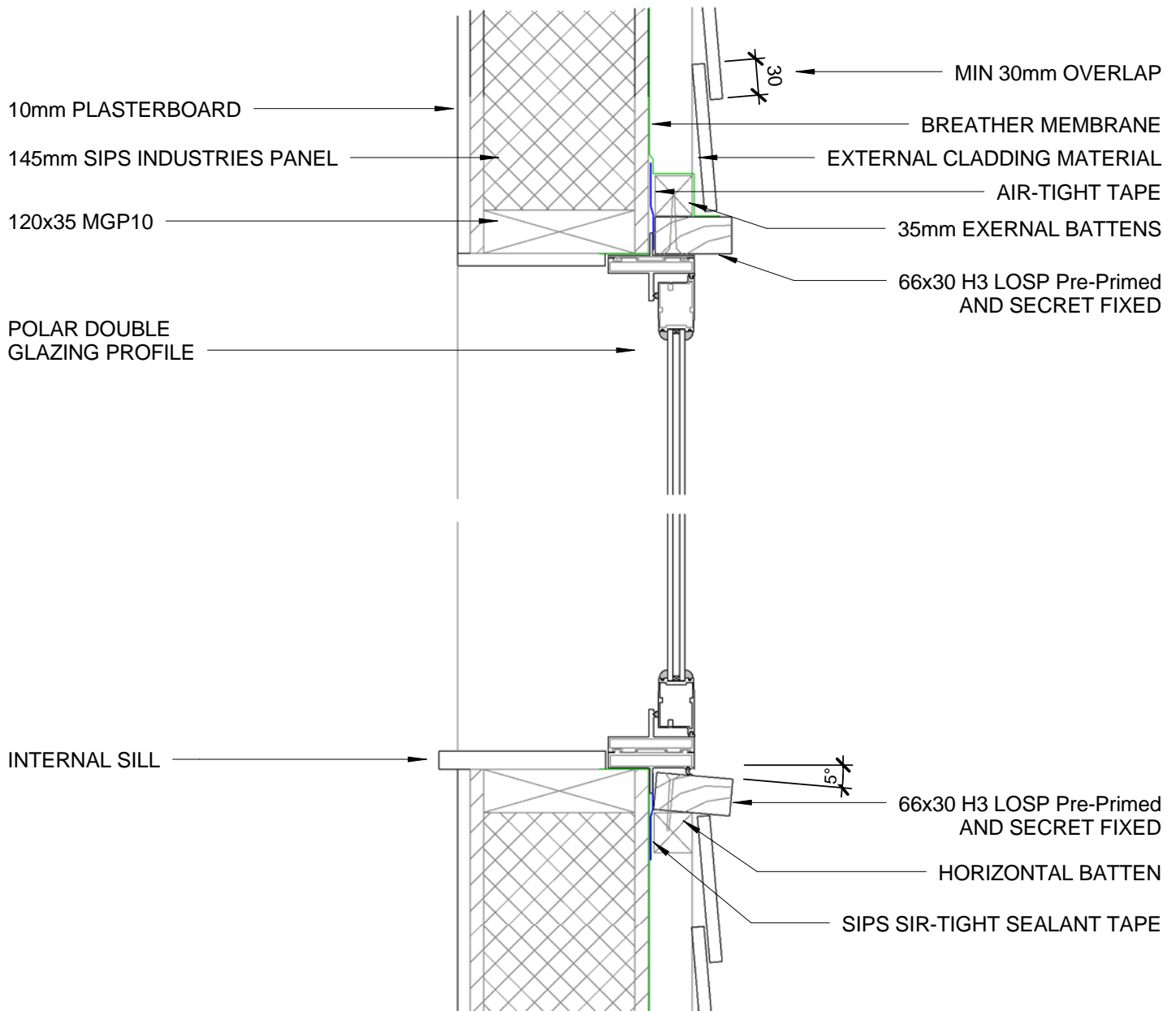
# LVL Beam Detail



NAIL LAMINATION

SECTION SIZE 'B'	NAIL DIA	NAIL LENGTH
35mm	3.06mm	75mm
45mm	3.3mm	90mm
63mm	3.3mm	100mm

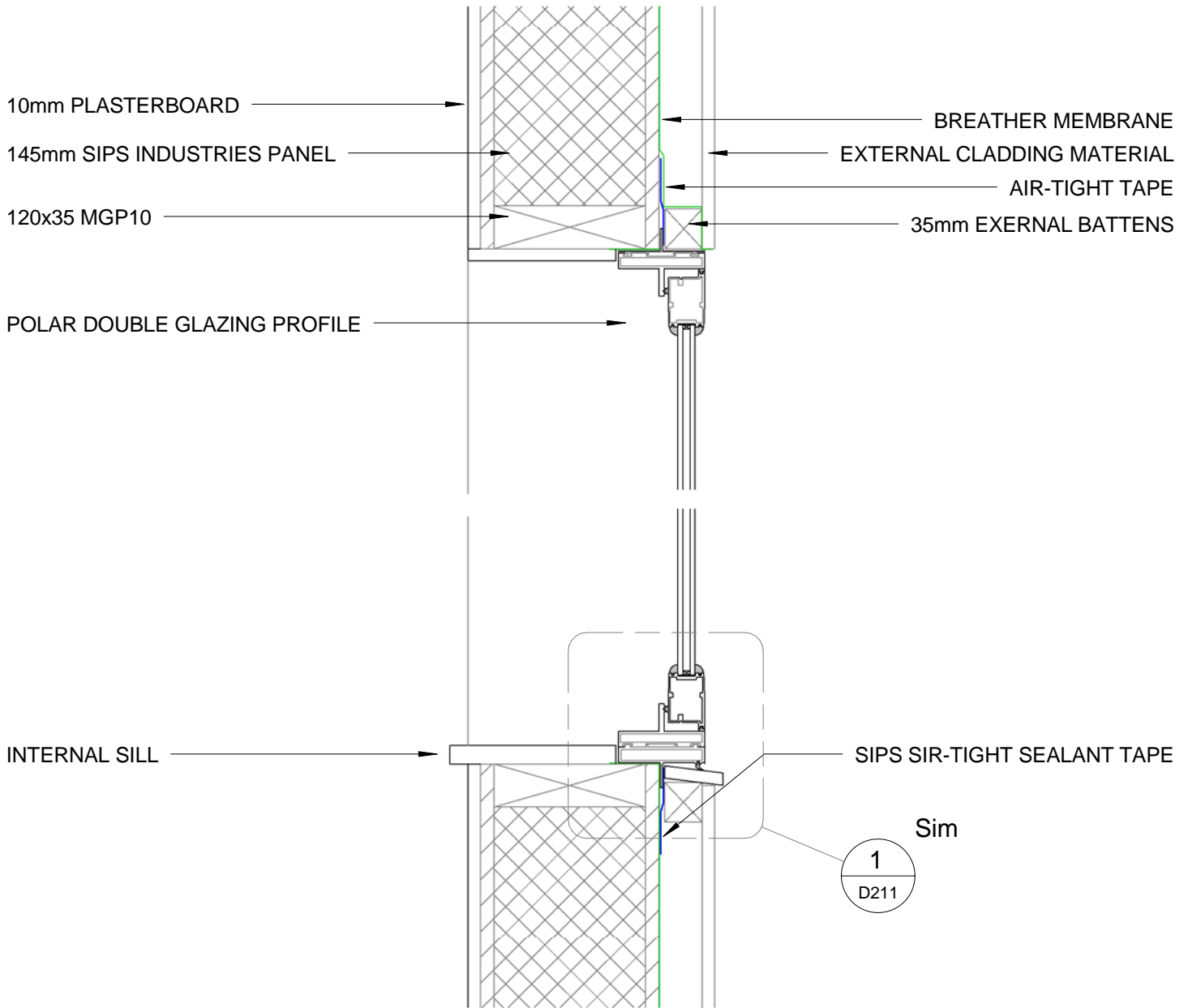
# WINDOW DETAIL- Polar Window with Weatherboard



\* SIPS INDUSTRIES PANELS WILL ACCEPT ALMOST ANY WINDOW AND MAY NEED PROJECT SPECIFIC DETAILING BY THE DESIGNER - WIINDOWS SHOWN ARE INDICITIVE ONLY

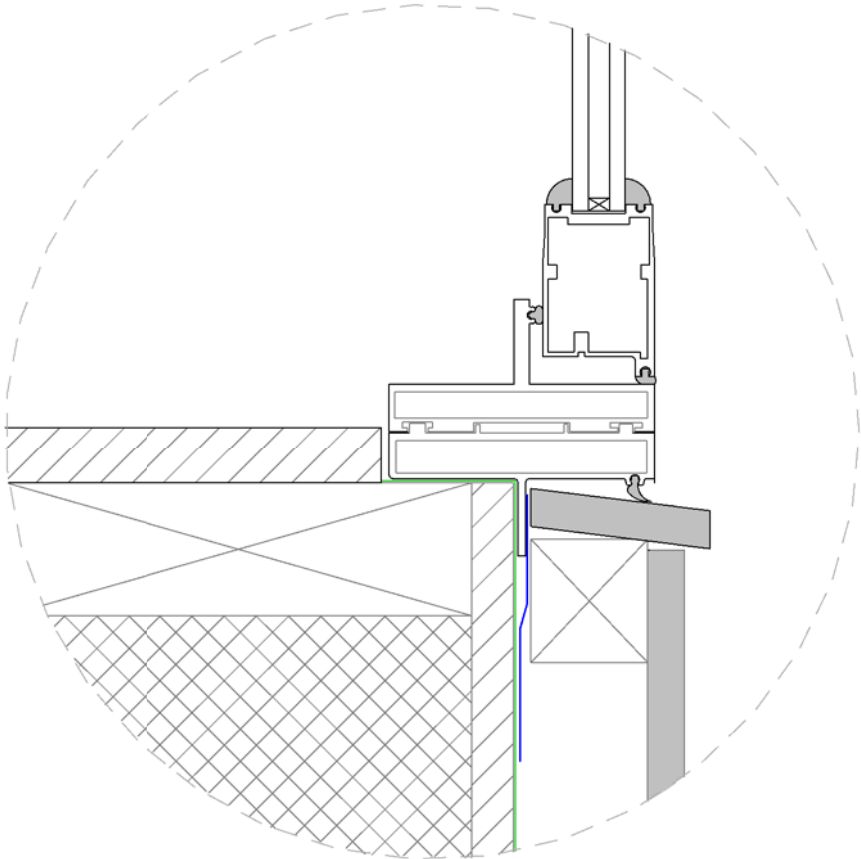


# WINDOW DETAIL - Polar Window with CS Sheeting



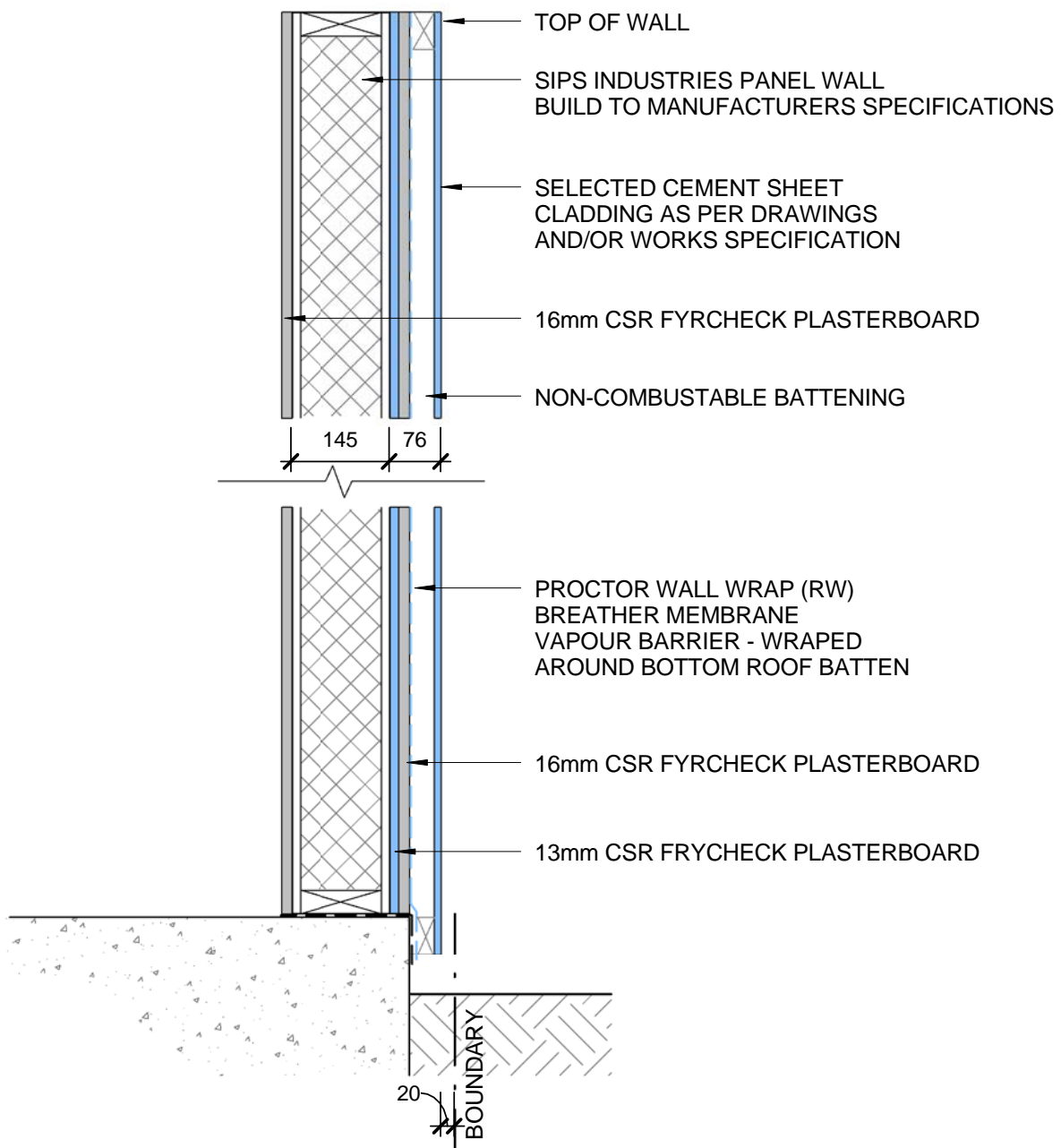
\* SIPS INDUSTRIES PANELS WILL ACCEPT ALMOST ANY WINDOW AND MAY NEED PROJECT SPECIFIC DETAILING BY THE DESIGNER - WINDOWS SHOWN ARE INDICATIVE ONLY

# WINDOW DETAIL - Sill Detail



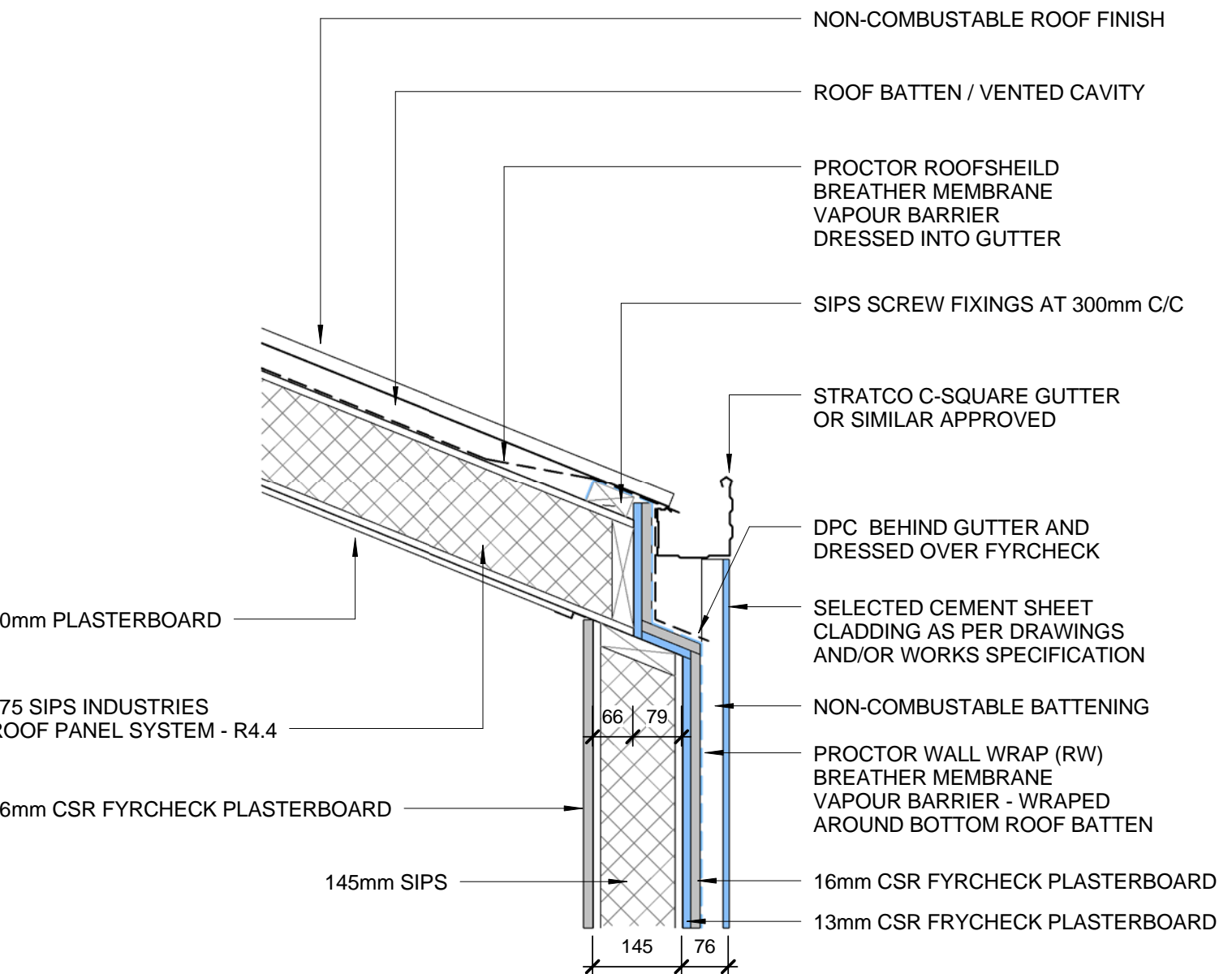


# SIPS 60/60/60 BOUNDARY WALL



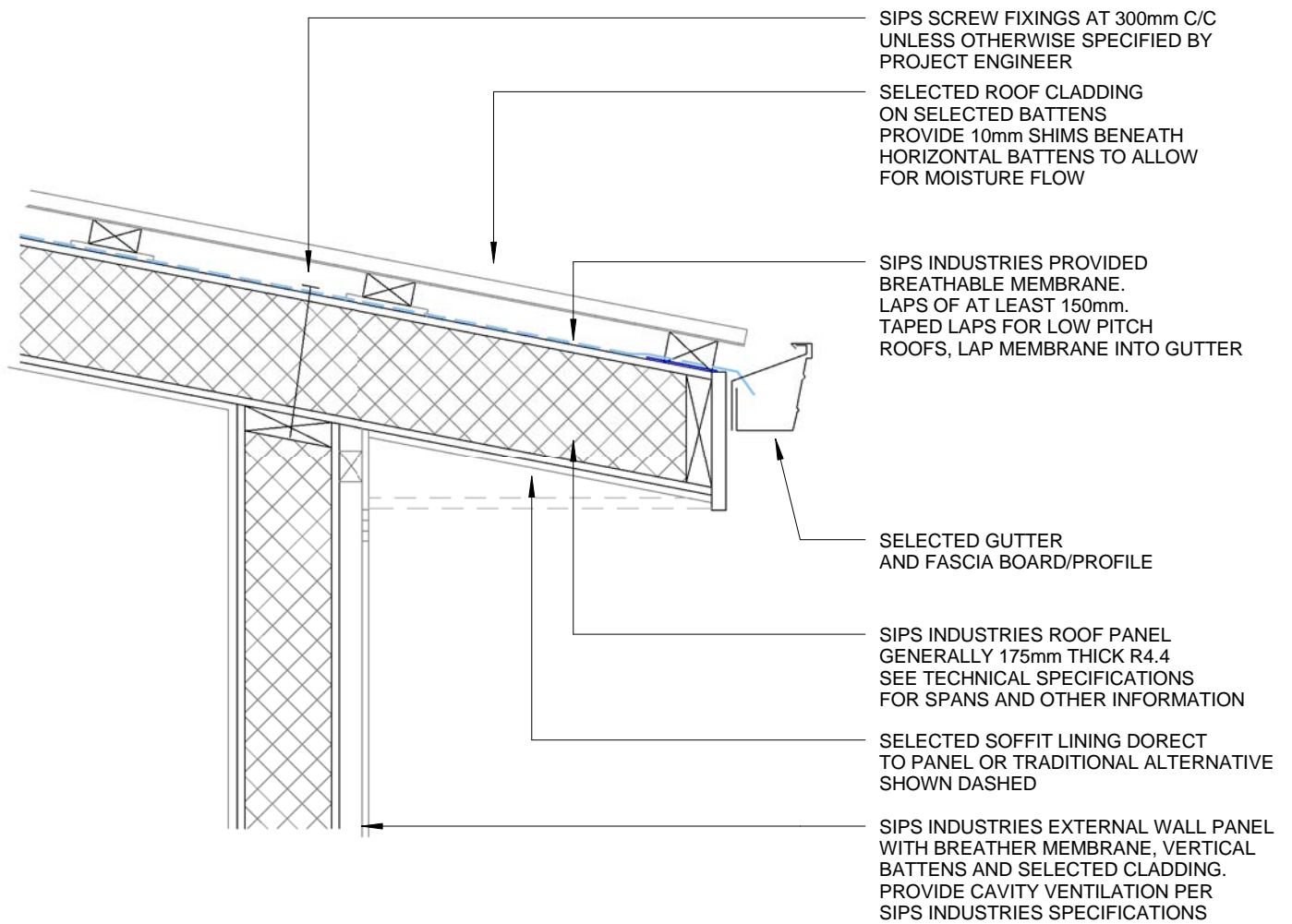


# SIPS 60/60/60 BOUNDARY WALL GUTTER

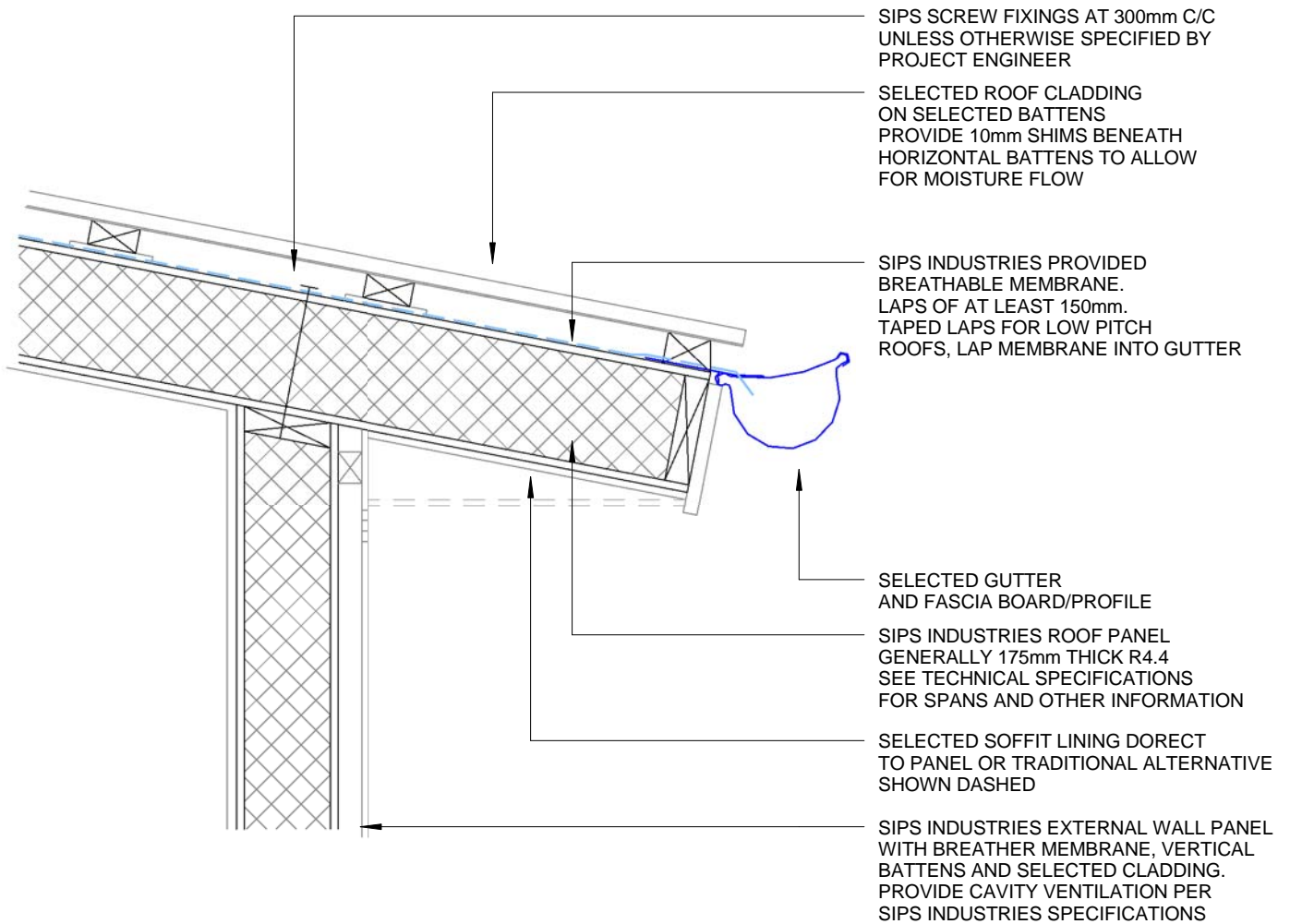




# SIPS EAVES DETAIL - PLUMB CUT ROOF

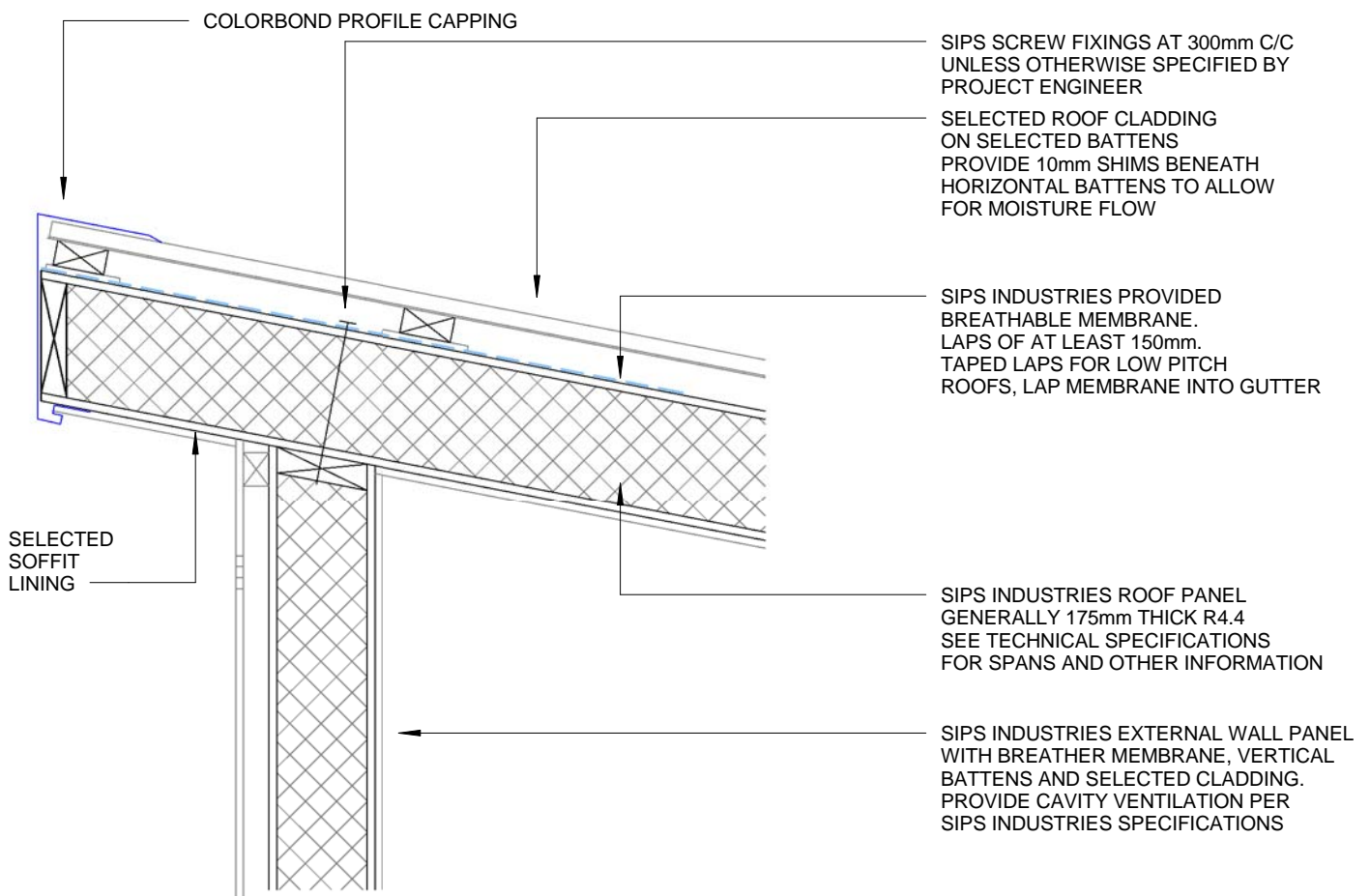


# SIPS EAVES DETAIL - SQUARE CUT ROOF

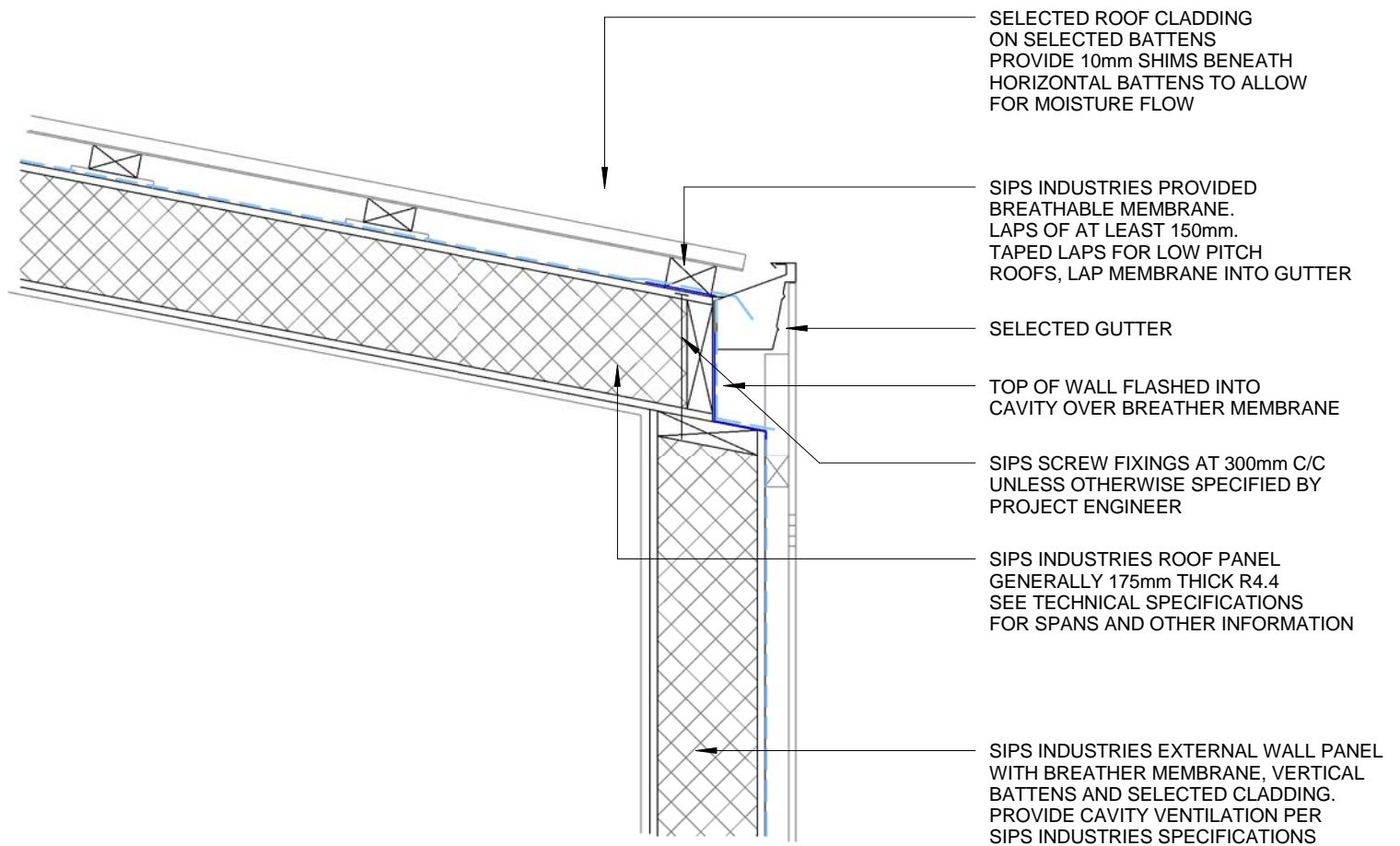




## SIPS SKILLION DETAIL - PLUMB CUT

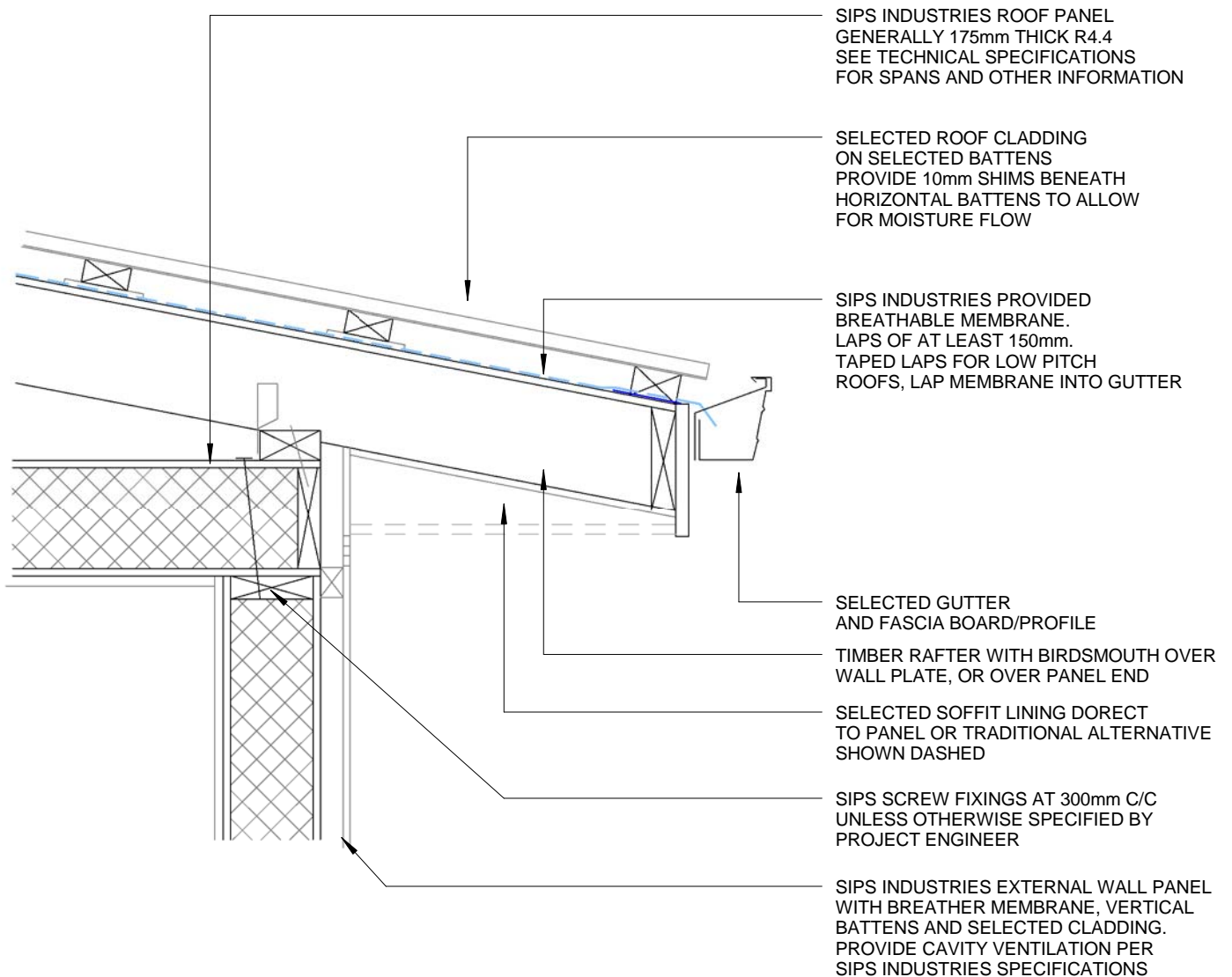


# SIPS EAVES DETAIL -CONCEALED GUTTER

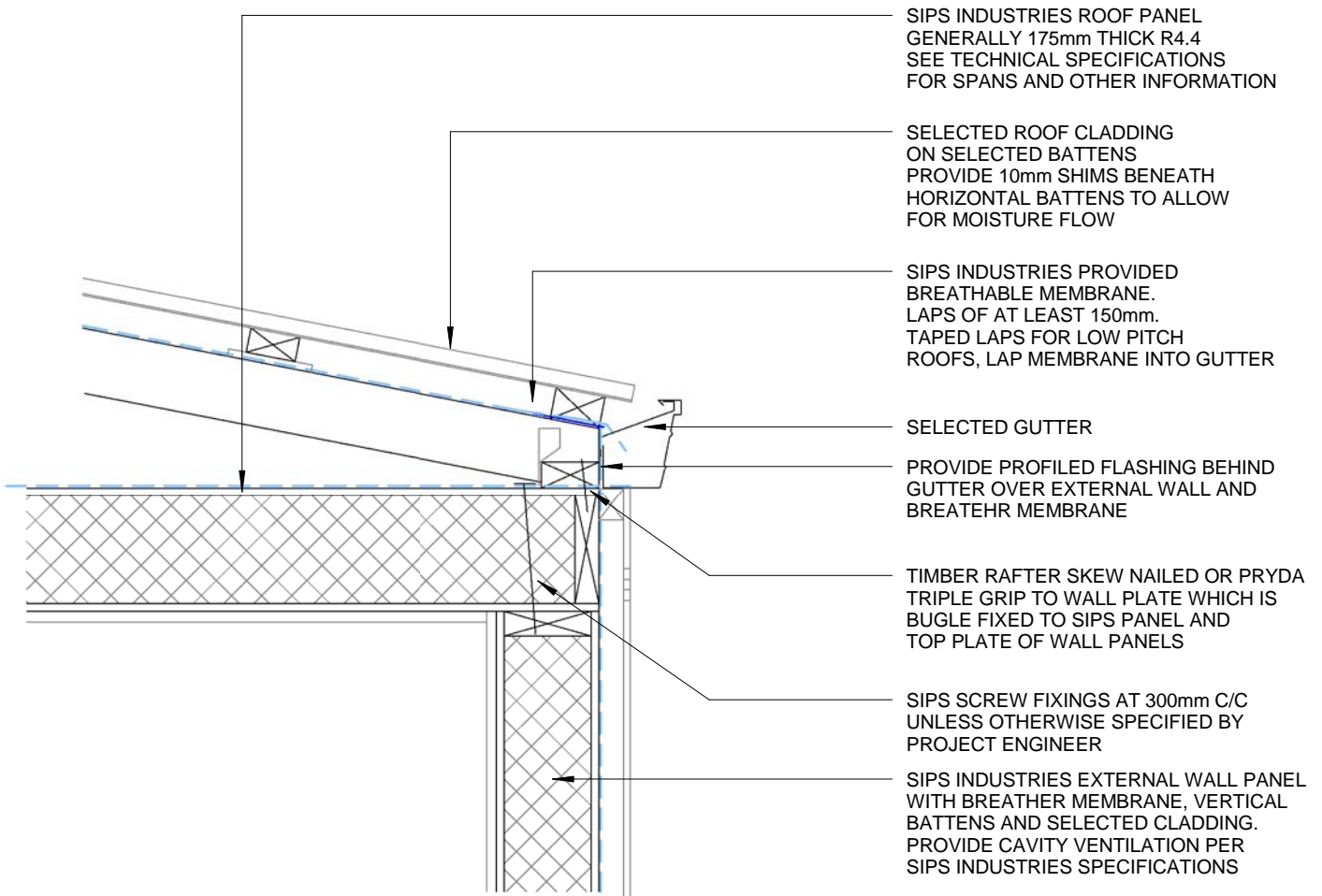




## SIPS EAVES DETAIL -SIPS CEILING



# SIPS EAVES DETAIL -SIPS CEILING -FLUSH GUTTER



SIPS INDUSTRIES ROOF PANEL  
GENERALLY 175mm THICK R4.4  
SEE TECHNICAL SPECIFICATIONS  
FOR SPANS AND OTHER INFORMATION

SELECTED ROOF CLADDING  
ON SELECTED BATTENS  
PROVIDE 10mm SHIMS BENEATH  
HORIZONTAL BATTENS TO ALLOW  
FOR MOISTURE FLOW

SIPS INDUSTRIES PROVIDED  
BREATHABLE MEMBRANE.  
LAPS OF AT LEAST 150mm.  
TAPED LAPS FOR LOW PITCH  
ROOFS, LAP MEMBRANE INTO GUTTER

SELECTED GUTTER

PROVIDE PROFILED FLASHING BEHIND  
GUTTER OVER EXTERNAL WALL AND  
BREATHABLE MEMBRANE

TIMBER RAFTER SKEW NAILED OR PRYDA  
TRIPLE GRIP TO WALL PLATE WHICH IS  
BUGLE FIXED TO SIPS PANEL AND  
TOP PLATE OF WALL PANELS

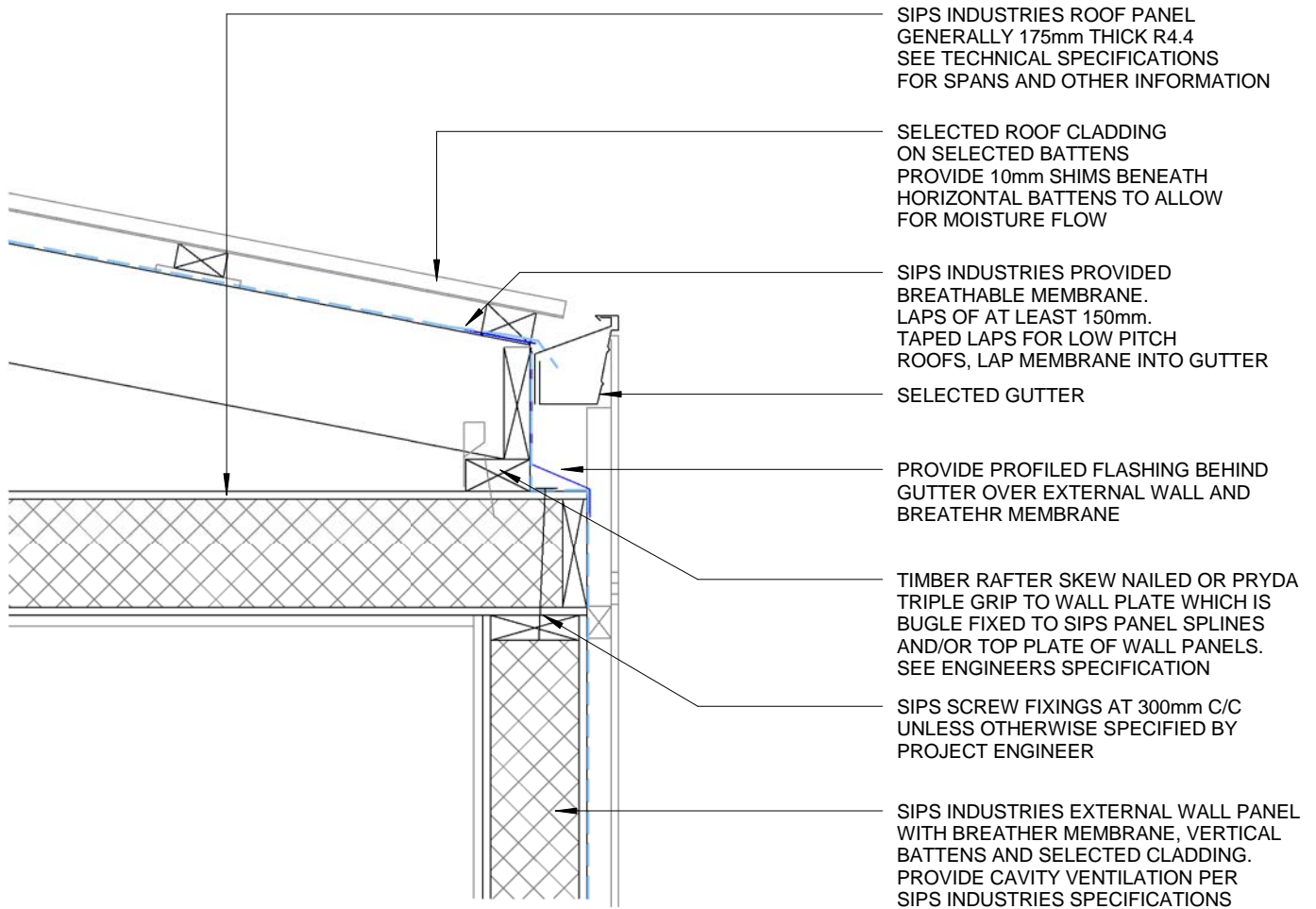
SIPS SCREW FIXINGS AT 300mm C/C  
UNLESS OTHERWISE SPECIFIED BY  
PROJECT ENGINEER

SIPS INDUSTRIES EXTERNAL WALL PANEL  
WITH BREATHABLE MEMBRANE, VERTICAL  
BATTENS AND SELECTED CLADDING.  
PROVIDE CAVITY VENTILATION PER  
SIPS INDUSTRIES SPECIFICATIONS





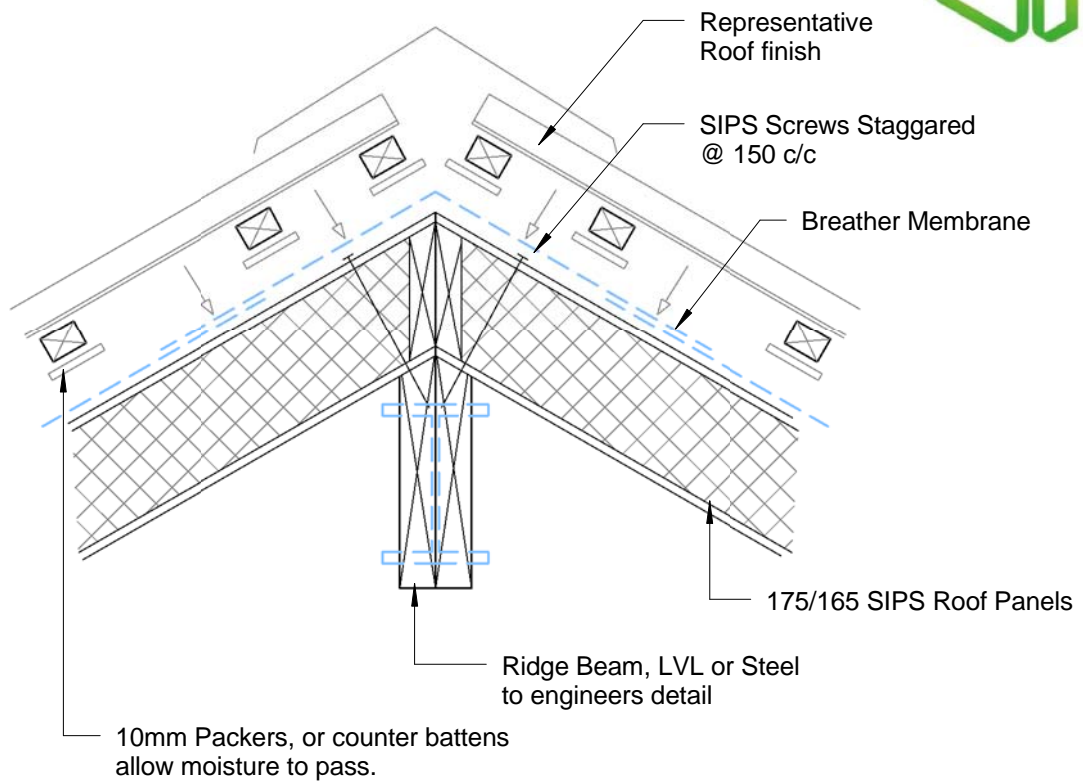
# SIPS EAVES DETAIL -SIPS CEILING -CONCEALED GUTTER







## RIDGE DETAIL - TYPICAL



## RIDGE DETAIL - HIDDEN RIDGE

